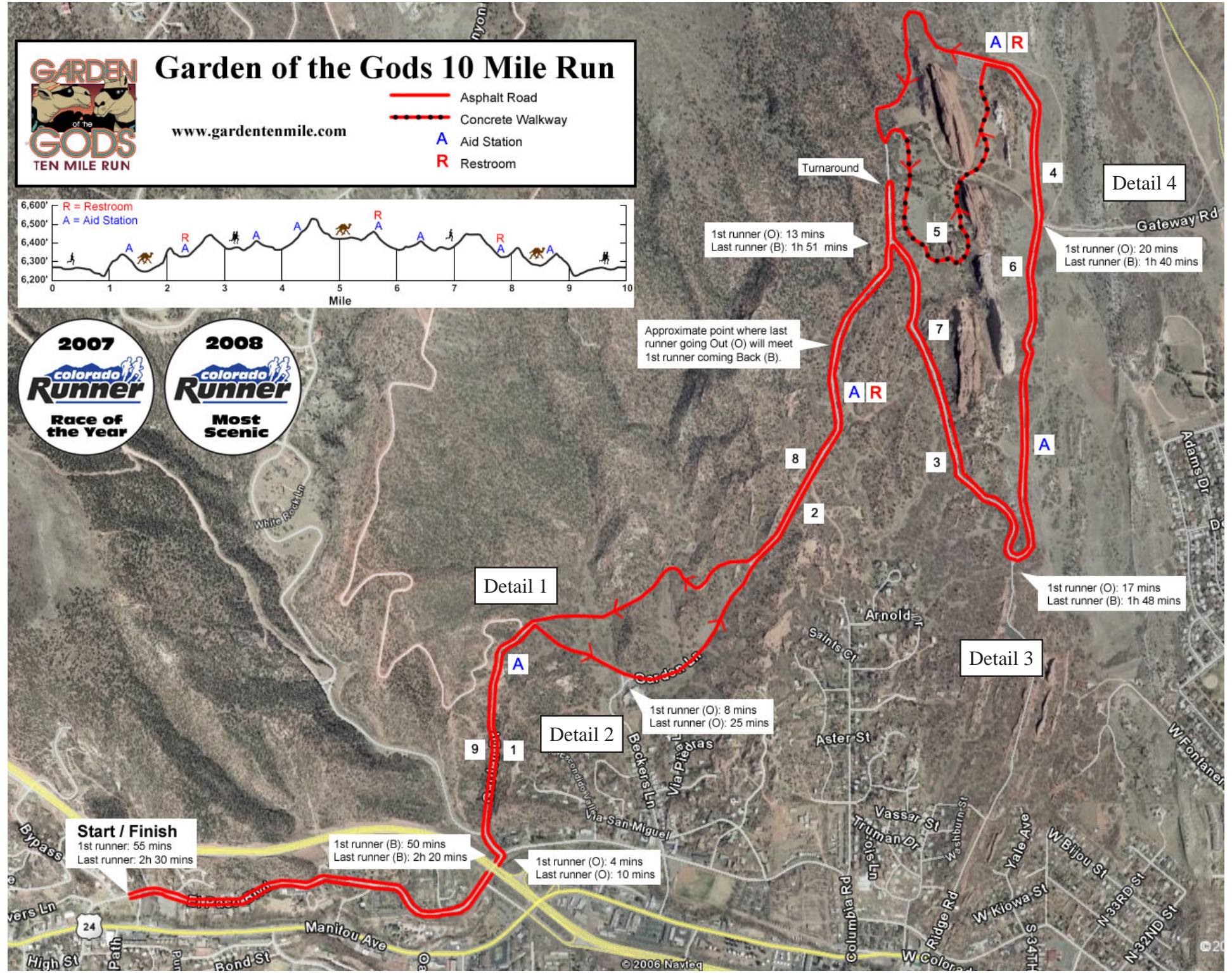
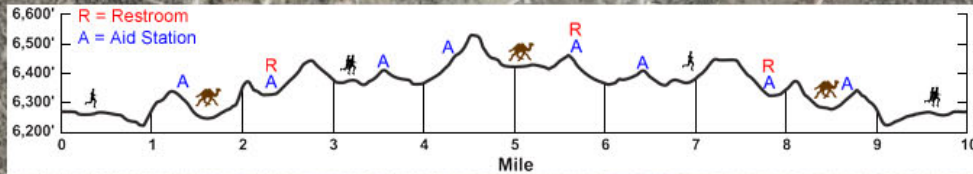




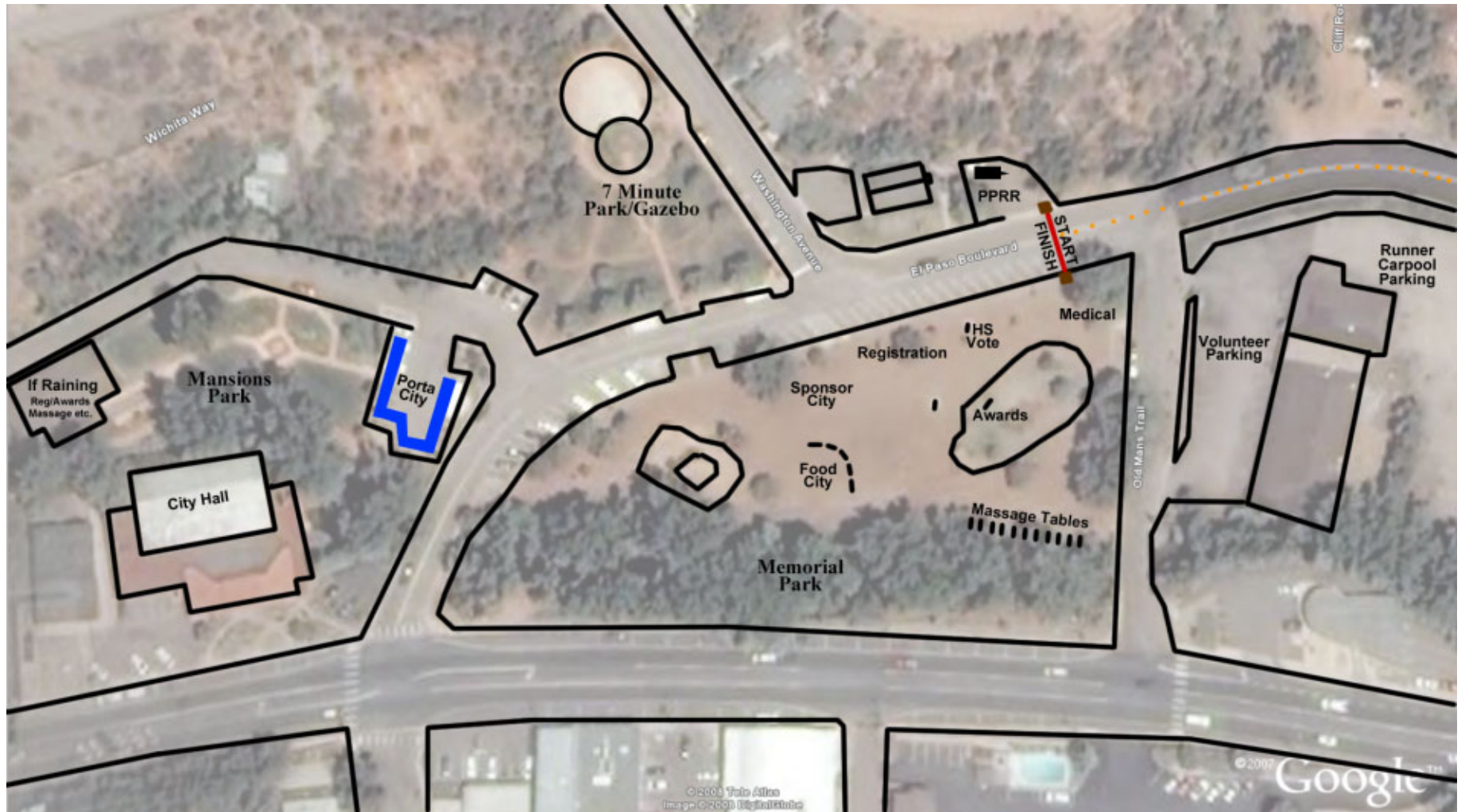
# Garden of the Gods 10 Mile Run

www.gardententmile.com

- Asphalt Road
- - - Concrete Walkway
- A Aid Station
- R Restroom



# Garden of the Gods 10 Mile Run Sunday, \_\_\_\_\_, \_\_\_\_\_ @ 7:00AM Manitou Springs - Start/Finish Area



# Garden of the Gods 10 Mile Run Sunday, June, \_\_\_\_ @ 7:00AM

## Manitou Springs Streets/Police - Traffic Control Map



	<b>Location</b>	<b>Blocked</b>	<b>Street Crew</b>	<b>Police</b>	<b>Notes</b>
A	Manitou Ave/El Paso Blvd	X			Barricades / May use fire truck to block as well
B	Lovers Ln/El Paso Blvd	X			Barricades
C	Washington/El Paso Blvd	X	1		
D	Old Mans Trl/El Paso Blvd	X			Barricades
E	Pinion & Cedar Lanes/ El Paso Blvd	X	1		
●●●	El Paso Blvd				Signage - "No Parking"
F	Mayfair Ave/El Paso Blvd	X	1		
G	Rockledge Ln/El Paso Blvd	X	1		
H	Garden of Gods Pl/Manitou Ave	X	1	1	Blocked at Manitou Avenue
I	Garden Dr/El Paso Blvd	X		1	Will also have Comms person here
J	Black Canyon Rd/Garden Dr				Signage - "Event in Progress"

Notes: Access to GOG via Trading Post to be blocked via type III barricade and Colorado Springs Police

# BARRICADES

## Garden of the Gods 10 Mile Run

Sunday, June, \_\_\_\_  
@ 7:00AM

6 type III barricades with road closed sign  
12 wood sawhorses

18 total barricades

Delievered on  
Saturday, June \_\_\_\_

Race to set up at 4am on  
Sunday, June \_\_\_\_

Pick-up anytime  
after 10am  
Sunday, June \_\_\_\_



Detail 1 - Rampart Range Road: Volunteer (1). For cars coming from Woodland Park have them wait for start and then exit to west. Once runners return have them wait for opening and exit to south.



Detail 2 - Beckers Lane/Trading Post: Colorado Springs police officer (1).



Detail 3 - Ridge Road: Colorado Springs police officer (1). Closed at north end of parking lot to allow access to overlook.



Detail 4 - Gateway Road: Colorado Springs police officer (1). Closed off between bridge and dirt road to allow access to Ranch facilities.

# Aid Station Setup

## Balanced Rock - 1.25/8.75

Water will come from Colorado Springs Utilities water truck.

Run water for a while!

**Equipment pickup - 5:45am (one truck should work)**

**441 Manitou Avenue, Manitou Springs**

**Be at station to setup - 6:00am**

**(At least 10 students and 2 adults)**

1st runner 7:07am

Last runner 9:15am (on way back)

Clean up and return via El Paso

### **Supplies (Provided by Race):**

6 tables

6 pitchers

4 garbage cans

1 roll of garbage can liners

3 Gatorade coolers

8 containers of Gatorade concentrate

(Fill 1/2 way with H<sub>2</sub>O, dump in concentrate, add rest of H<sub>2</sub>O)

1 box of 2,500 cups plus 600 in tubes

3 hoses (3x50)

1 hose splitter

2 shut-offs

1 pair of pliers

2 boxes rubber gloves

handiwipes

duct tape

### **Supplies (Recommended you bring):**

rain ponchos, sunscreen

snacks/food in car for before/after



# Aid Station Setup

## Scotsman - 2.25/7.75

Water will come from public restroom. **Run water for a while!**

**Equipment pickup - 5:45am (one truck should work)**  
**441 Manitou Avenue, Manitou Springs**

**Be at station to setup - 6:00am**  
**(At least 10 students and 2 adults)**

1st runner 7:12am

Last runner 8:56am (on way back)

Clean up and return via Ridge

### **Supplies (Provided by Race):**

4 tables

4 pitchers

4 garbage cans

1 roll of garbage can liners

3 Gatorade coolers

8 containers of Gatorade concentrate

(Fill 1/2 way with H<sub>2</sub>O, dump in concentrate, add rest of H<sub>2</sub>O)

1 box of 2,500 cups plus 600 in tubes

**1 water key**

3 hoses (1X150, 2x50)

1 hose splitter

2 shut-offs

1 pair of pliers

2 boxes rubber gloves

handiwipes

duct tape

### **Supplies (Recommended you bring):**

rain ponchos, sunscreen

snacks/food in car for before/after



# Aid Station Setup

## Ridge - 3.5/6.5

Water will come from fire hydrant which Colorado Springs Utilities will hook up. **Run water for a while!**

**Equipment pickup - 5:45am (one truck should work)**  
**441 Manitou Avenue, Manitou Springs**

**Be at station to setup - 6:00am**  
**(At least 10 students and 2 adults)**

1st runner 7:18am

Last runner 8:37am (on way back)

Clean up and return via Ridge

### Supplies (Provided by Race):

4 tables

4 pitchers

4 garbage cans

1 roll of garbage can liners

3 Gatorade coolers

8 containers of Gatorade concentrate

(Fill 1/2 way with H<sub>2</sub>O, dump in concentrate, add rest of H<sub>2</sub>O)

1 box of 2,500 cups plus 600 in tubes

3 hoses (3x50)

1 hose splitter

2 shut-offs

1 pair of pliers

2 boxes rubber gloves

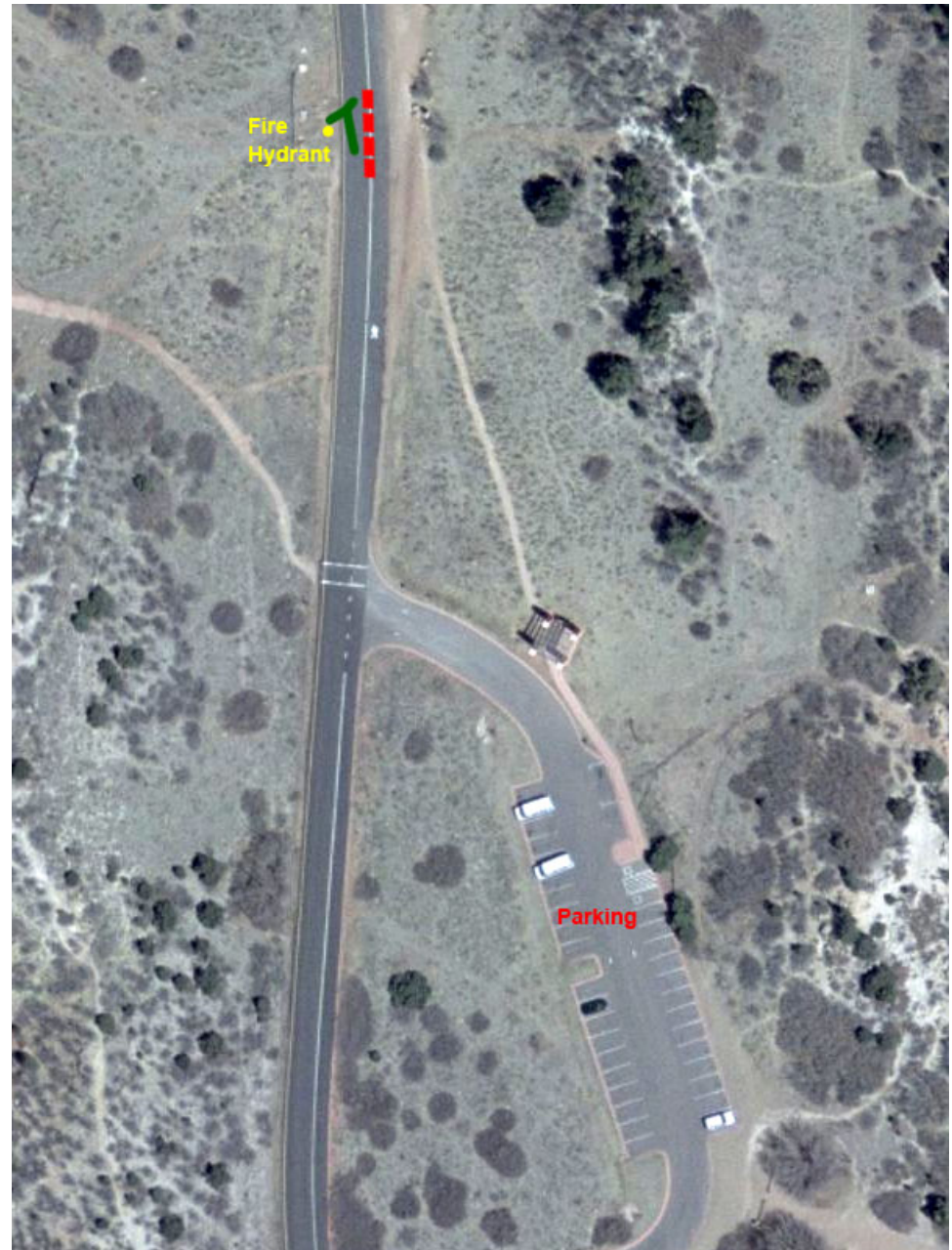
handiwipes

duct tape

### Supplies (Recommended you bring):

rain ponchos, sunscreen

snacks/food in car for before/after



# Aid Station Setup

## North Gateway - 4.5/5.5

Water will come from public restroom. **Run water for a while!**

**Equipment pickup - 5:45am (one truck should work)**

**441 Manitou Avenue, Manitou Springs**

**Be at station to setup - 6:00am**

**(At least 10 students and 2 adults)**

1st runner 7:22am

Last runner 8:22am (on way back)

Clean up and return via visitors center

### **Supplies (Provided by Race):**

4 tables

4 pitchers

4 garbage cans

1 roll of garbage can liners

3 Gatorade coolers

8 containers of Gatorade concentrate

(Fill 1/2 way with H<sub>2</sub>O, dump in concentrate, add rest of H<sub>2</sub>O)

1 box of 2,500 cups plus 600 in tubes

**1 water key**

4 hoses (2x150, 2X50)

1 hose splitter

2 shut-offs

1 pair of pliers

2 boxes rubber gloves

handiwipes

duct tape

### **Supplies (Recommended you bring):**

rain ponchos, sunscreen

snacks/food in car for before/after

